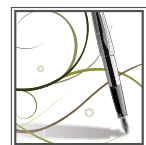
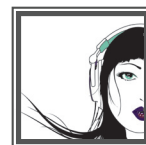
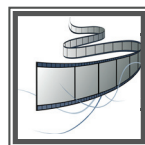
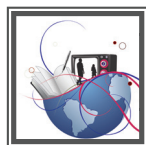


Gallery Activity



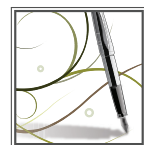
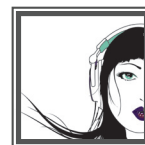
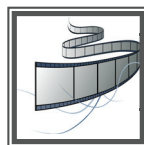
Expert 3: The Spoken Word / Answers

Task 1: Gathering information

Answer the following questions. Remember to read the information boards, look at the exhibits and read the mi-Guide information carefully to find the answers to the questions. Your 'home' group is relying on you!

- 1 Who invented the phonograph, the first 'talking machine'? When? Which Manchester newspaper reported this event? When?
A Thomas Alva Edison. 1877. Manchester Guardian. 1878.
- 2 What were sounds recorded on?
A Cylinders covered with tinfoil or waxed paper.
- 3 Who invented the first magnetic recording medium? When?
A Valdemar Poulsen. 1898.
- 4 Who introduced the compact audio-cassette recorder? When?
A Philips. 1963.
- 5 What was the significance of this?
A It started the trend for home recording.
- 6 Who invented the gramophone? When?
A Emil Berliner. 1888.
- 7 What was its significance?
A The machines were cheaper and louder and gramophone records were cheaper and easier to manufacture.
- 8 When was the 12-inch LP (Long Playing Record) introduced?
A 1948.
- 9 Who patented the first telephone? When did he do this?
A Alexander Graham Bell and his assistant Thomas Watson. 1876.
- 10 What was needed to transmit the sound? What was it transmitted through?
A Electricity. Copper cables.
- 11 When was the first public telephone or 'call office' opened? When was the Post Office No. 8 kiosk introduced? What features did it have?
A 1886. 1968. Easy to clean and vandal proof.

Gallery Activity



Expert 3: The Spoken Word / Answers

- 12 Who developed the first automatic telephone exchange? When?
 A Almon B. Stowger. 1891.
- 13 Who developed the telegraph? When?
 A William Cooke and Charles Wheastone. 1837.
- 14 When did Marconi patent his system for sending telegraph messages through the air (wireless)?
 A 1896.
- 15 What is the name of Manchester's first radio station ? When did this station, which went on to form part of the British Broadcasting Company, first broadcast publically in Manchester?
 A 2ZY. (November) 1922.
- 16 What were the most popular types of radio used in the 1930s ? How many households owned a radio in Britain by 1930?
 A Valve. More than 3 million.
- 17 Who developed the first pocket sized radio? When?
 A Sony. 1957.
- 18 When was Radio Manchester launched by the BBC?
 A 1970.

Task 2: Coding in Morse code

Write your name in Morse code.

.....

Task 3: Inventors

Match the name of the person or people with their invention by drawing a line between the two.

